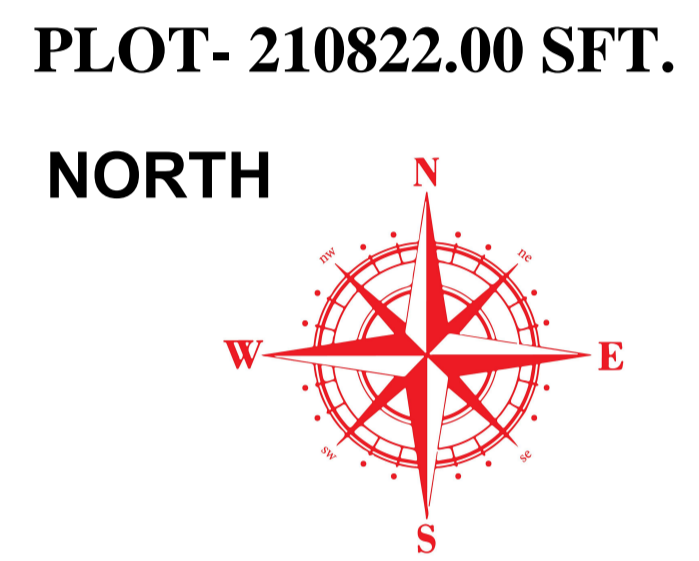
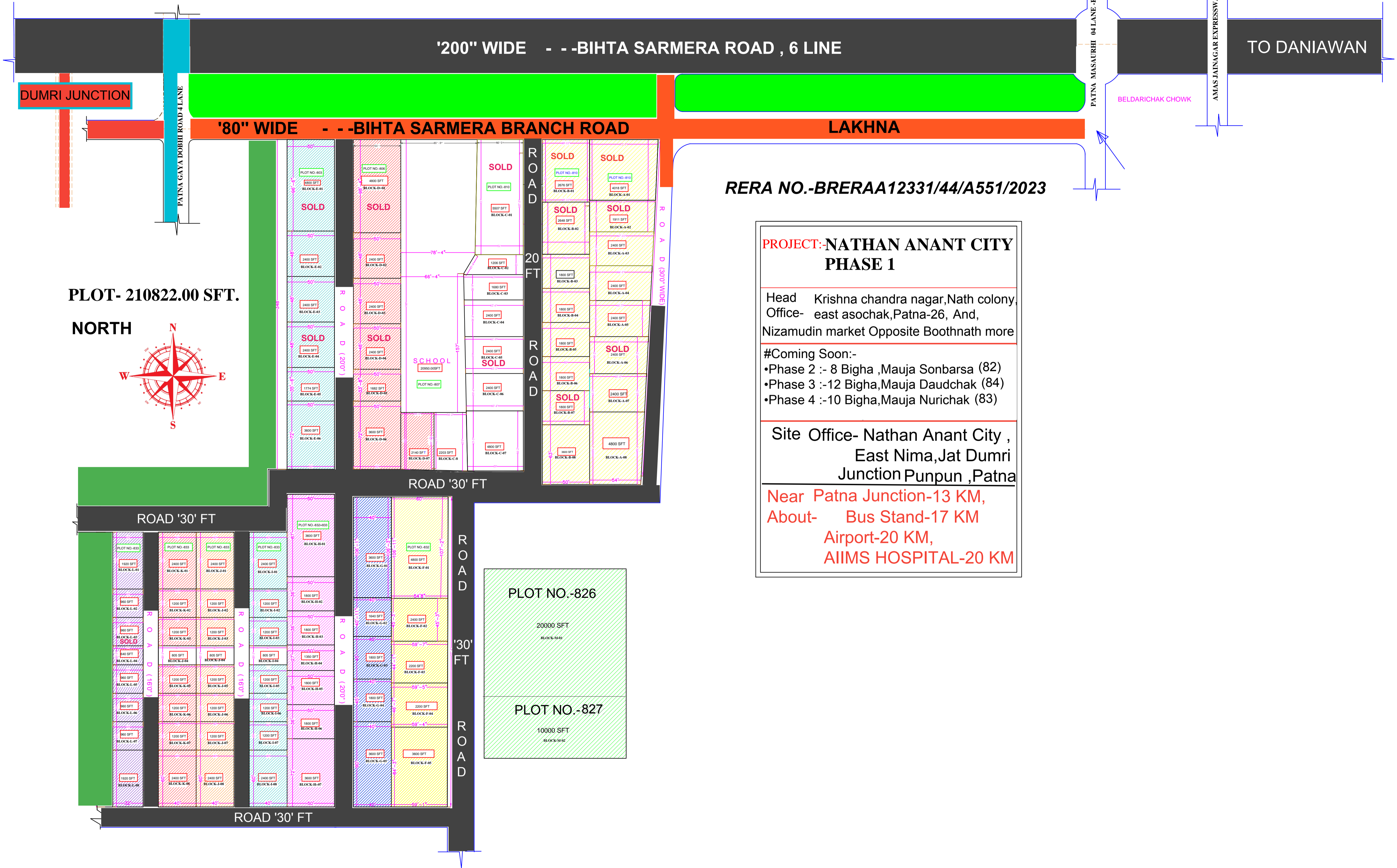


REG NO.-U45309BR2020PTC047763

GSTN NO.-10AAHCN1289Q1Z3

NATHAN ANANT CITY , PHASE-I
AT .-MAUZA- NIMA (51) , WEST- LAKHNA , BLOCK + THANA- PUNPUN -804453



RERA NO.-BRERAA12331/44/A551/2023

PROJECT:-NATHAN ANANT CITY
PHASE 1

Head Krishna chandra nagar,Nath colony,
Office- east asochak,Patna-26, And,
Nizamudin market Opposite Boothnath more

- #Coming Soon:-
- Phase 2 :- 8 Bigha ,Mauja Sonbarsa (82)
 - Phase 3 :-12 Bigha,Mauja Daudchak (84)
 - Phase 4 :-10 Bigha,Mauja Nurichak (83)

Site Office- Nathan Anant City ,
East Nima,Jat Dumri
Junction Punpun ,Patna

Near Patna Junction-13 KM,
About- Bus Stand-17 KM
Airport-20 KM,
AIIMS HOSPITAL-20 KM